

# LINEA BELLA



customcrafters

# MILANO RECEPTION DESK

A nod to fashion, the Milano Reception Desk situates perfectly within the whole Linea Bella collection or as a standalone piece, striking and commanding attention without being ornate.

# MILANO RECEPTION DESK



MILANO RECEPTION DESK  
IN WALNUT VENEER



MILANO RECEPTION  
DESK IN PEWTER PINE



MILANO RECEPTION  
DESK IN BLACK

## LINEA BELLA



### + SPECIFICATION NOTES

✓ Solid surface (SS) finishes can be specified on any surface tops. Plastic laminate (PL) can be specified on any surface tops or bases.

Wood finish (WD) can only be specified for the bases.

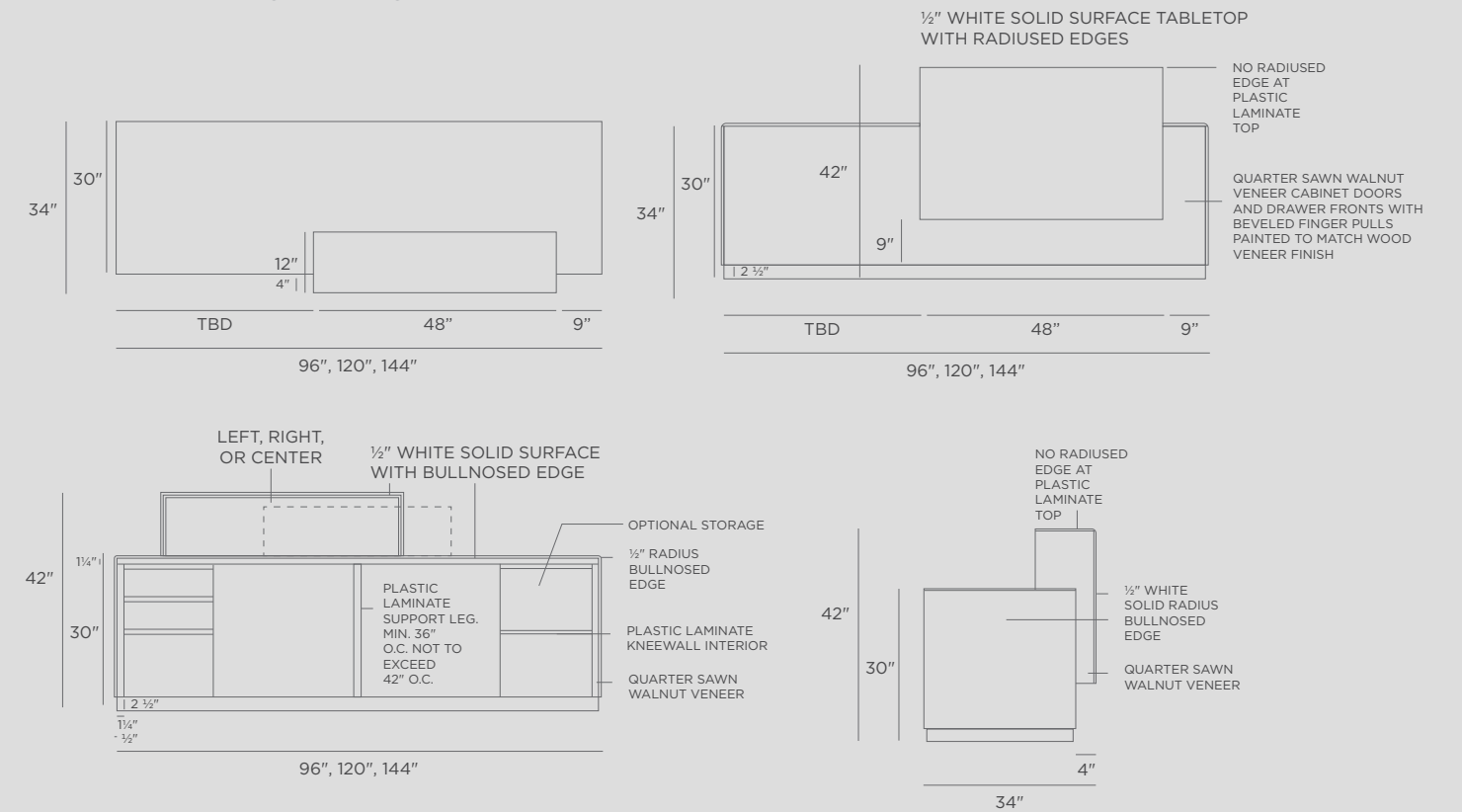
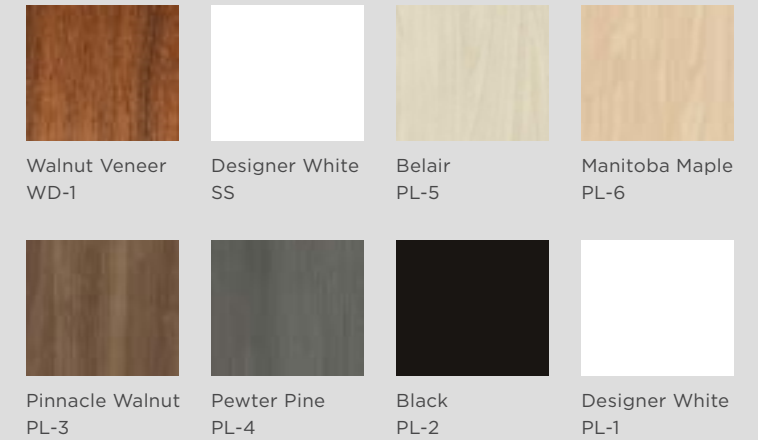
● The transaction top can be specified in the center, to the left or right -- as viewed from the front. It is not adjustable in the field, so it must be specified upon order so the drill holes align.

Transaction counter is a preassembled unit with predetermined mounting location.

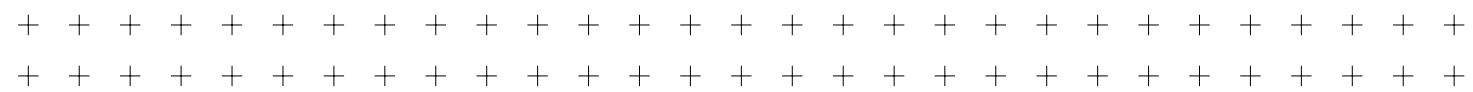
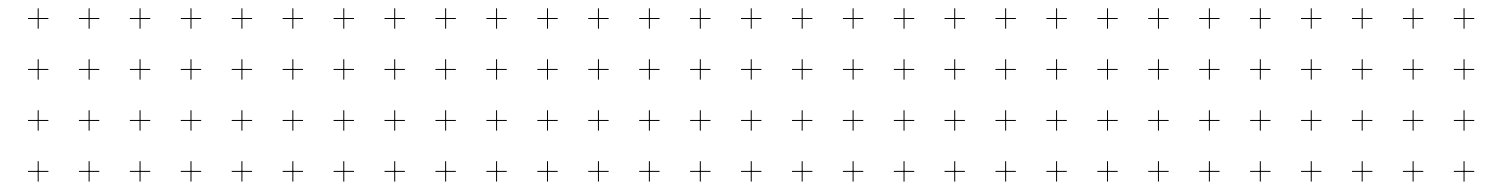
Reception desk comes standard without storage. Can be specified with optional matching box/box/file, file/file and/or lateral file cabinets.

See Pricing on Page 10

### + MATERIAL SPECIFICATIONS







# MILANO RECEPTION DESK

SKU	DESCRIPTION	DIMENSIONS	SURFACE MATERIAL	LIST PRICE
MR3496SSWD	RECEPTION DESK WITH 1/2"THK SOLID SURFACE WORKSURFACE SURFACE, TRANSACTION COUNTER AND END PANELS. BASES TO BE QUARTER SAWN WALNUT VENEER	8'-0"L X 2'-10D X 3'-6"H O.A.	"TOP: SS BASE: WD"	\$26,700
MR3496SSPL#	RECEPTION DESK WITH 1/2"THK SOLID SURFACE WORKSURFACE SURFACE, TRANSACTION COUNTER AND END PANELS. BASES TO BE PLASTIC LAMINATE.	8'-0"L X 2'-10D X 3'-6"H O.A.	"TOP: SS BASE: PLAM"	\$17,700
MR3496PL#PL#	RECEPTION DESK WITH 1/2"THK PLASTIC LAMINATE WORKSURFACE SURFACE, TRANSACTION COUNTER AND END PANELS. BASES TO BE PLASTIC LAMINATE.	8'-0"L X 2'-10D X 3'-6"H O.A.	"TOP: PLAM BASE: PLAM"	\$8,700
MR34120SSWD	RECEPTION DESK WITH 1/2"THK SOLID SURFACE WORKSURFACE SURFACE, TRANSACTION COUNTER AND END PANELS. BASES TO BE QUARTER SAWN WALNUT VENEER	10'-0"L X 2'-10D X 3'-6"H O.A.	"TOP: SS BASE: WD"	\$33,200
MR34120SSPL#	RECEPTION DESK WITH 1/2"THK SOLID SURFACE WORKSURFACE SURFACE, TRANSACTION COUNTER AND END PANELS. BASES TO BE PLASTIC LAMINATE.	10'-0"L X 2'-10D X 3'-6"H O.A.	"TOP: SS BASE: PLAM"	\$22,200
MR34120PL#PL#	RECEPTION DESK WITH 1/2"THK PLASTIC LAMINATE WORKSURFACE SURFACE, TRANSACTION COUNTER AND END PANELS. BASES TO BE PLASTIC LAMINATE.	10'-0"L X 2'-10D X 3'-6"H O.A.	"TOP: PLAM BASE: PLAM"	\$11,200
MR34(LENGTH)SSWD	RECEPTION DESK WITH 1/2"THK SOLID SURFACE WORKSURFACE SURFACE, TRANSACTION COUNTER AND END PANELS. BASES TO BE QUARTER SAWN WALNUT VENEER	12'-0"L X 2'-10D X 3'-6"H O.A.	"TOP: SS BASE: WD"	\$40,000
MR34(LENGTH)SSPL#	RECEPTION DESK WITH 1/2"THK SOLID SURFACE WORKSURFACE SURFACE, TRANSACTION COUNTER AND END PANELS. BASES TO BE PLASTIC LAMINATE.	12'-0"L X 2'-10D X 3'-6"H O.A.	"TOP: SS BASE: PLAM"	\$26,000
MR34(LENGTH)PL#PL#	RECEPTION DESK WITH 1/2"THK PLASTIC LAMINATE WORKSURFACE SURFACE, TRANSACTION COUNTER AND END PANELS. BASES TO BE PLASTIC LAMINATE.	12'-0"L X 2'-10D X 3'-6"H O.A.	"TOP: PLAM BASE: PLAM"	\$13,000

SPECIFY PLACEMENT OF TRANSACTION COUNTER. LEFT, RIGHT OR CENTER

# MILANO STORAGE OPTIONS

SKU	DESCRIPTION	DIMENSIONS	SURFACE MATERIAL	LIST PRICE
BB18WD	UNDERSURFACE BOX/BOX/FILE CABINET IN QUARTER SAWN WALNUT VENEER	1'-6"W X 1'-11"D X 2'-3 5/8"H	WD	\$1,500
BB18PL#	UNDERSURFACE BOX/BOX/FILE CABINET IN PLASTIC LAMINATE	1'-6"W X 1'-11"D X 2'-3 5/8"H	PLAM	\$925
FF18WD	UNDERSURFACE FILE/FILE CABINET IN QUARTER SAWN WALNUT VENEER	1'-6"W X 1'-11"D X 2'-3 5/8"H	WD	\$1,500
FF18PL#	UNDERSURFACE FILE/FILE CABINET IN PLASTIC LAMINATE	1'-6"W X 1'-11"D X 2'-3 5/8"H	PLAM	\$925
LF36WD	UNDERSURFACE LATERAL FILE CABINET IN QUARTER SAWN WALNUT VENEER	3'-0"W X 1'-11"D X 2'-3 5/8"H	WD	\$1,600
LF36PL#	UNDERSURFACE LATERAL FILE CABINET IN PLASTIC LAMINATE	3'-0"W X 1'-11"D X 2'-3 5/8"H	PLAM	\$1,275

PRICING IS LIST PRICE. CALL FOR DEALER DISCOUNT.



# MADE TO MEASURE. BUILT TO SUIT.

**Chicago Office**

One Prudential Plaza  
130 E Randolph St, Suite 2050  
Chicago, IL 60601

**Forest Park Office / Manufacturing**

7540 Roosevelt Rd  
Forest Park, IL 60130  
708.546.5841

**Kris Imala**

CEO, Managing Principal & Majority Owner  
kimala@customcrafterschicago.com  
m: 312.590.7808

**Paul Kelly**

President  
paulk@customcrafterschicago.com  
m: 773.617.8408

**Thomas Flore**

Chief Operating Officer  
tom@customcrafterschicago.com  
m: 773.849.4095

Designed By Nick Poblador +  
Custom Crafters Team

