

LINEA BELLA



customcrafters

SALERNO COLLABORATIVE TABLE

The Salerno Collaborative Table, named after the lively port town, features sleek, uncomplicated lines for a contemporary look. Its bullnose edge and subtle quirk give it a look that is both timeless and sophisticated. Its clean lines and simple design make it a versatile piece of furniture that can be used in a variety of settings.

SALERNO COLLABORATIVE TABLE



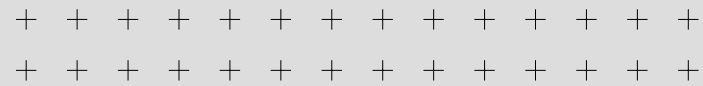
SALERNO COLLABORATIVE TABLE
IN WALNUT VENEER



SALERNO COLLABORATIVE
TABLE IN PEWTER PINE



SALERNO COLLABORATIVE
TABLE IN BLACK



+ SPECIFICATION NOTES

✓ Solid surface (SS) finishes can be specified on any surface tops. Plastic laminate (PL) can be specified on any surface tops or bases.

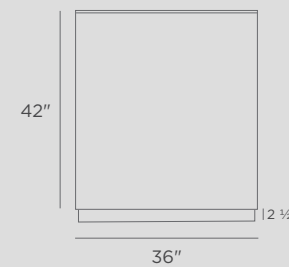
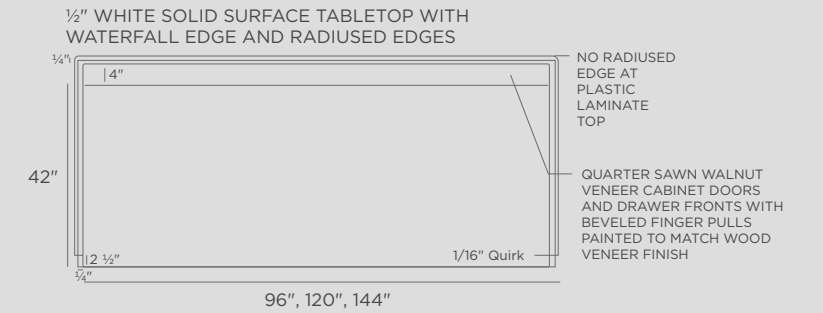
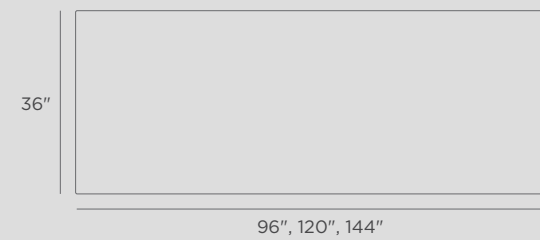
Wood finish (WD) can only be specified for the bases.

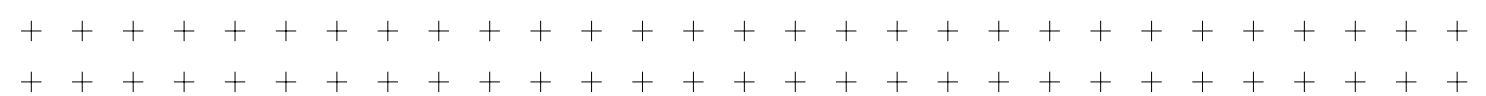
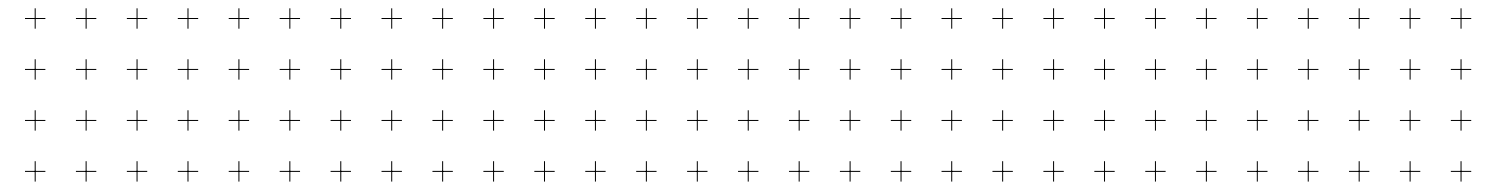
● Tables ship knock-down. Assembly required.

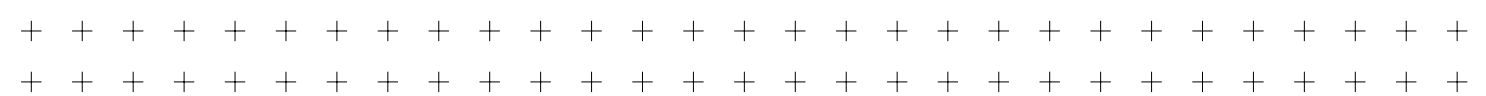
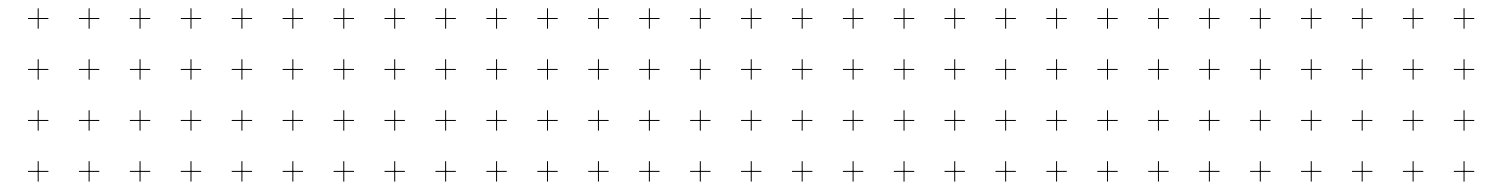
See Pricing on Page 11

+ MATERIAL SPECIFICATIONS

Walnut Veneer WD-1	Designer White SS	Belair PL-5	Manitoba Maple PL-6
Pinnacle Walnut PL-3	Pewter Pine PL-4	Black PL-2	Designer White PL-1







PRICE GUIDE

SALERNO COLLABORATIVE TABLE

SKU	DESCRIPTION	DIMENSIONS	SURFACE MATERIAL	LIST PRICE
SC3696SSWD	TABLE TOP, 1/2" THK SOLID SURFACE WITH RADIUSED EDGE AND FINISHED END PANELS. QUARTER SAWN WALNUT VENEER STRUCTURE	8'-0" L X 3'-0" W X 42" H	"TOP/END PANELS: SS STRUCTURE: WD"	\$19,200
SC3696SSPL#	TABLE TOP, 1/2" THK SOLID SURFACE WITH RADIUSED EDGE AND FINISHED END PANELS. PLASTIC LAMINATE STRUCTURE	8'-0" L X 3'-0" W X 42" H	"TOP/END PANELS: SS STRUCTURE: PLAM"	\$12,800
SC3696PL#PL#	TABLE TOP, 1/2" THK PLASTIC LAMINATE WITH SQUARE EDGE AND FINISHED END PANELS. PLASTIC LAMINATE STRUCTURE	8'-0" L X 3'-0" W X 42" H	"TOP/END PANELS: PLAM STRUCTURE: PLAM"	\$6,800
SC36120SSWD	TABLE TOP, 1/2" THK SOLID SURFACE WITH RADIUSED EDGE AND FINISHED END PANELS. QUARTER SAWN WALNUT VENEER STRUCTURE	10'-0" L X 3'-0" W X 42" H	"TOP/END PANELS: SS STRUCTURE: WD"	\$22,800
SC36120SSPL#	TABLE TOP, 1/2" THK SOLID SURFACE WITH RADIUSED EDGE AND FINISHED END PANELS. PLASTIC LAMINATE STRUCTURE	10'-0" L X 3'-0" W X 42" H	"TOP/END PANELS: SS STRUCTURE: PLAM"	\$15,200
SC36120PL#PL#	TABLE TOP, 1/2" THK PLASTIC LAMINATE WITH SQUARE EDGE AND FINISHED END PANELS. PLASTIC LAMINATE STRUCTURE	10'-0" L X 3'-0" W X 42" H	"TOP/END PANELS: PLAM STRUCTURE: PLAM"	\$7,800
SC36144SSWD	TABLE TOP, 1/2" THK SOLID SURFACE WITH RADIUSED EDGE AND FINISHED END PANELS. QUARTER SAWN WALNUT VENEER STRUCTURE	12'-0" L X 3'-0" W X 42" H	"TOP/END PANELS: SS STRUCTURE: WD"	\$26,800
SC36144SSPL#	TABLE TOP, 1/2" THK SOLID SURFACE WITH RADIUSED EDGE AND FINISHED END PANELS. PLASTIC LAMINATE STRUCTURE	12'-0" L X 3'-0" W X 42" H	"TOP/END PANELS: SS STRUCTURE: PLAM"	\$17,800
SC36144PL#PL#	TABLE TOP, 1/2" THK PLASTIC LAMINATE WITH SQUARE EDGE AND FINISHED END PANELS. PLASTIC LAMINATE STRUCTURE	12'-0" L X 3'-0" W X 42" H	"TOP/END PANELS: PLAM STRUCTURE: PLAM"	\$8,800

PRICING IS LIST PRICE. CALL FOR DEALER DISCOUNT.

MADE TO MEASURE. BUILT TO SUIT.

Chicago Office

One Prudential Plaza
130 E Randolph St, Suite 2050
Chicago, IL 60601

Forest Park Office / Manufacturing

7540 Roosevelt Rd
Forest Park, IL 60130
708.546.5841

Kris Imala

CEO, Managing Principal & Majority Owner
kimala@customcrafterschicago.com
m: 312.590.7808

Paul Kelly

President
paulk@customcrafterschicago.com
m: 773.617.8408

Thomas Flore

Chief Operating Officer
tom@customcrafterschicago.com
m: 773.849.4095

Designed By Nick Poblador +
Custom Crafters Team

customcrafterschicago.com

+ + + + + + + + + + + + + + +

